



BINGO! PROGRAM



HOT BALLS



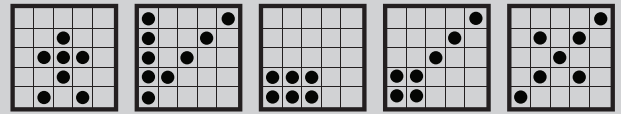
HOT BALL #1
\$



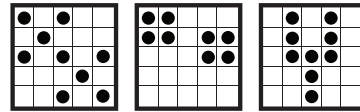
HOT BALL #2
\$

EARLY BIRDS | 5 GAMES | BLUE 9-ON | \$5 EACH

- 1. Little Man Page 1 | \$250
- 2. Double Bingo (Corners OK) Page 2 | \$250
- 3. Any 6 Pack (Free Space OK) Page 3 | \$250
- 4. Small Crazy Kite Page 4 | \$250
- 5. Diagonal + In/Out Corner (no overlap) Page 5 | \$250



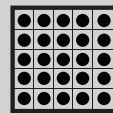
- 6. Two Corner Xs (6 ways) Page 1 | 6-On | \$1,000
- 7. Any Two Blocks of Four Page 2 | 6-On | \$1,000
- 8. Up or Down Goal Post Page 3 | 6-On | \$1,000



9. DUAL-ACTION COVERALL | 1-ON RED | \$2 EACH

Starts at \$1,500 - Grows \$50 each time played

- 38#s or Fewer Posted Jackpot
- 39#s \$1,000
- 40#s \$750
- 41#s \$500
- 42#s or more - up to 10 winners \$250

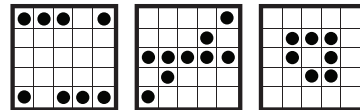


Daub only 1 number in each box

42#S OR MORE WITH MORE THAN 10 WINNERS WILL SHARE \$2,500

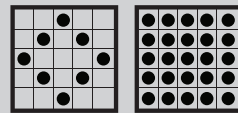
~ INTERMISSION ~

- 10. Four Top + Four Bottom Page 4 | 6-On | \$1,000
- 11. Double Easy Way Page 5 | 6-On | \$1,000
- 12. Center Small Missing Link Page 6 | 6-On | \$1,000



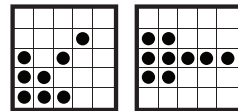
DIAMOND "G" | 9-ON BROWN | \$2 EACH

- 13. First Part - Large Diamond - \$250
- 14. Second Part - Coverall



*Cover all your card in the equal amount of the first "G-Ball" called - Pays posted Jackpot (Eligible "G-Ball" range is 48-60)
*Before Target # - Pays \$500
*After Target # - Pays \$250

- 15. Crazy Short Tailed Arrow Page 7 | 6-On | \$1,000
- 16. Crazy Mallet Page 8 | 6-On | \$1,000



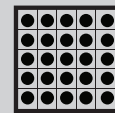
~ INTERMISSION ~

17. TMC COVERALL | 3-ON PINK | \$2 EACH

Use the 40 numbers pre-drawn at the start

Coverall in 48 #s or less - Pays Posted Jackpot | Consolation - Pays \$250

*Jackpot starts at \$1,500 and increases \$100 & one number each Sunday until won

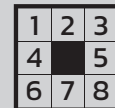


\$250 UP TO POSTED JACKPOT

18. TM PICK 8 | 3-ON ORANGE | \$3 EACH

Computer Selects a Quick Pick for You

- All 8 in 20 numbers or less Posted Jackpot
- All 8 in 21 thru 24 numbers \$750
- All 8 in 25 numbers or more \$500



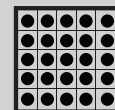
\$500 UP TO POSTED JACKPOT

19. JACKPOT BONANZA | 3-ON PURPLE | \$2 EACH

Use the 40 numbers pre-drawn at the start

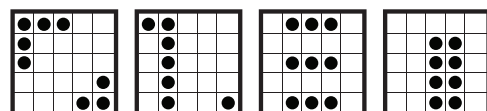
Coverall in 49 #s or less - Pays Posted Jackpot | Consolation - Pays \$500

*Jackpot increases \$200 each Sunday until won



\$500 UP TO POSTED JACKPOT

- 20. Opposite Big and Small Brackets Page 9 | 6-On | \$1,000
- 21. Hardway and 2 Corners (no overlap) ... Page 10 | 6-On | \$1,000
- 22. Inside Layer Cake (as shown) Page 11 | 6-On | \$1,000
- 23. Eight Pack Anywhere Page 12 | 6-On | \$1,000





HOUSE RULES

1. Players must be 18 years of age. No alcohol allowed in the Bingo Hall.
2. Reserving or holding a seat(s) is not allowed. Guest must buy-in first before finding a seat. Any personal items left on tables are subject to removal by Bingo Staff and/or Security.
3. Only one computer per person is allowed. Any machine malfunctions voids all pays and plays.
4. A valid government issued ID is required for all Club Card transactions and credit/debit purchases.
5. All sales are final. Refunds or bingo credit for missing or unused games will require approval from Bingo Management.
6. All cell phones and other devices must be kept on silent, vibrate, or turned off while in session.
7. Each guest is responsible for playing all their own games purchased. Bingo Clerks may cover temporarily but are not responsible for missing Bingos. **FAMILY OR FRIENDS MAY PLAY OR WATCH YOUR CARDS IN THE EVENT OF AN EMERGENCY OR WHEN IT HAS BEEN DETERMINED THAT BINGO DOES NOT HAVE ENOUGH CLERKS TO HELP COVER.** You must make every attempt to call a Clerk or Management for coverage. Management will determine all factors before validating a Bingo with these conditions.
8. Each guest must have their valid and signed admissions slip in view at all times. No ticket-sharing or pack-splitting is allowed. Guests who share bingo packs will not be paid. After declaring Bingo, guest is to provide the Clerk with their valid admissions slip. If the guest cannot provide the Clerk with an admissions slip, Bingo Management will make the decision to verify or invalidate the Bingo.
9. **IT IS THE PLAYERS' RESPONSIBILITY TO SAY "BINGO" LOUD ENOUGH TO STOP "THE CALLER" AND STOP THE GAME PRIOR TO ANY PORTION OF THE NEXT BALL BEING CALLED. BINGO STAFF MEMBERS ARE NOT RESPONSIBLE FOR STOPPING THE GAME FOR YOU.** If a player does not stop the caller from announcing any portion of the next number, that potential Bingo will be considered invalid and no payout will be made.
10. Once the caller announces "The Game is Now Closed", only those cards declared as a valid Bingo will be honored. A Bingo is only valid when won on the last number called.
11. Only the actual draw objects, which can be verified from those that have been drawn, are officially recognized for game play. The numbers on the flash-boards are for the players' convenience only. Management is not responsible for any verbal or nonverbal errors from staff.
12. Table Mountain Casino Resort is not responsible for any lost cards, admission slips, or personal property.
13. In the event there are multiple winners during a game, the posted prize will be divided equally among the winners for that game.
14. A valid ID and Social Security Card are required for any winnings exceeding the amount of \$1,199. No transfers of winnings to another player will be allowed.
15. Management reserves the right to cancel any session or adjust the payouts based on attendance.
16. Management reserves the right to interpret all of the above rules and make determinations based on the studied information presented from staffing or guests. All decisions made by Bingo Management are final.

1	2	3	4	5	6	7	8	9	10	11	12	13	14	15
16	17	18	19	20	21	22	23	24	25	26	27	28	29	30
31	32	33	34	35	36	37	38	39	40	41	42	43	44	45
46	47	48	49	50	51	52	53	54	55	56	57	58	59	60
61	62	63	64	65	66	67	68	69	70	71	72	73	74	75